

NEWS  
WILMORE  
NEWSLETTER

*October, 2007*



# THE PAUL SAWYIER STORY

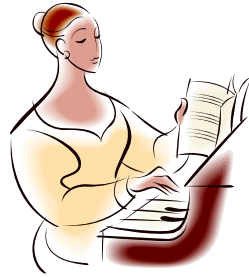
In September the High Bridge Park Pavilion hosted the fifth annual production of *The Paul Sawyer Story*, based on the life of Kentucky's most famous artist who resided on a riverboat shanty at High Bridge for a period of time. You know him for his beautiful paintings of the Kentucky River and its Palisades. Many characters portrayed his life; they acted out how his life impacted his paintings. Pictured: Whitley Mitchell and Taylor DeCecca take part in the play. Taylor's part is portraying the young Paul Sawyer.

Adapted from Nettie Henry Gleen's book, "LOVE TO ALL, YOUR PAUL", this rendition of *The Paul Sawyer Story* was written by Elexene Cox of Jessamine County. Her gifted talents also include making costumes, designing and painting sets, selecting the cast and music, directing and producing the play. Mrs. Cox is applauded over and over for her originality and creativity of this production.

Members of the Jessamine County community come together to put on this annual production. The cast, who by now after the fifth year of acting together, say they feel like family. Norman Klein portrayed Paul Sawyer. He acted out drawing a sketch as many watercolor artists do prior to using paint. Doug Fain's role was a riverboat captain.

Margaret Morgan has truly kept a vision of being one of the instrumental people for making places like the High Bridge Park come back to life. For quite awhile the Park had been almost abandoned, was run down and an eyesore except for the beautiful view of the Kentucky Palisades. Today special events like wedding receptions and family reunions take place almost every weekend!

## Concert pianist Eda Jameson



Returns to

**Wilmore to Perform**

Renowned concert pianist Eda Jameson was featured in a special concert series Oct. 1-4 at three venues: Asbury College, Asbury Seminary and the Wilmore Senior Community Center at Wesley Village. All appearances were open to the public. Mrs. Jameson performed a full program of classic composers including Bach, Mozart, Debussy and Chopin.

Mrs. Jameson, from Ashland, OR, has been a friend and supporter of Asbury College and Asbury Seminary for more than 30 years. Her first appearance was in 1983 at the Asbury College Parent's Weekend. Since then she has been invited by the presidents of both institutions to perform her annual piano recitals. This fall will mark 25 successive years of piano recitals performed by Eda Jameson at Asbury College and Asbury Seminary. Dr. Bill Goold, long time friend of the Jameson's and professor at Asbury Seminary proclaims, "Over the past 25 years I have heard this amazing woman play many recitals and concerts. Her years of faithful, total dedication to her pianist art have resulted in an incredibly extensive repertoire which is now committed to memory. Eda Jameson is unforgettable!"

Jameson made her first public appearance as a pianist at the age of 5. She holds bachelor's and master's degrees in music and composition from UCLA. Look for details about next year's concert event by concert pianist Mrs. Eda Jameson.

## WILMORE WOMEN'S CLUB TO START 51<sup>st</sup> YEAR

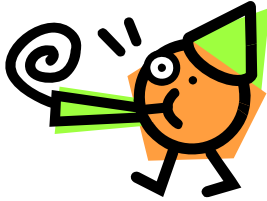
The Wilmore Women's Club welcomes a new year! The Club starts their annual meetings each October. They meet in November and December. During the cold dubious weather months, they do not meet. They resume in March and meet until June. New members are always welcome. Ladies of all ages are invited to attend the meetings.

The Club is a community organization. For over 50 years they have done a lot to beautify our warm and friendly town. Projects include giving scholarships each spring to outstanding high school seniors from Wilmore and High Bridge. They also help sponsor the DARE program at Wilmore Elementary School.

In order for the Club to be able to keep up with their projects, dues are collected. \$10.00 goes a long way when there are many members. The Wilmore Women's Club invites you to become a member. You are not required to attend all of the meetings. It does mean you are interested in supporting the organization. The more members, the more money to help with the existing projects. Ladies of Wilmore please consider joining ☺ There is an interesting program line-up this year. Again we invite you, and we hope you join us at the Wilmore Community Center at Wesley Village.

Please call Kathleen Demaray, Membership Chair Person for more information about the Club at 858-3239.

## Treats On Main



Wednesday, October 31<sup>st</sup>  
6:00-7:30pm  
Main Street, Wilmore

Contact Wilmore Parks &  
Recreation at #858-9031 for more  
information.

Bring out the family for another fun-filled family event in Wilmore! Main Street in Wilmore will be blocked off. Businesses and organizations open and distribute candy. There will be carnival-type games and prizes also. This is a safe and fun event for your children. Candy distribution and games will take place from 6:00-7:30pm and the costume contest will take place at 7:30pm in the Pavilion at the Downtown Green (located behind Jessamine Christian Healthcare). Refreshments will be available throughout the evening.

Plan to spend your Halloween evening having a safe, fun and happy experience in downtown Wilmore.

Mt. Freedom Baptist Church  
Wild West Fall Fest  
October 27th  
6:00 p.m. - 8:00 p.m.  
FREE!  
Church Parking Lot  
Games, Live Music, Treats,  
Family Photo

Dress in your western wear  
and join us!  
For more information,  
contact the church office at  
858-3422.  
Kelley Woolums

Mt. Freedom Baptist Church  
100 South Lexington Avenue

**WILMORE'S  
OLD FASHIONED  
MUSICAL CHRISTMAS  
ANNOUNCEMENTS...**

**ALREADY ???**

Yes, already! This year the festival falls on Saturday, December 1<sup>st</sup> !!! There are many ways for you to be part of this year's festival with your friends and families! For example, if you would like to play or know of someone with musical talent who would like to play with a group or individually please contact Amy Fitch at Wilmore Parks & Recreation at 858-9031. Other ideas could be to perform a Christmas drama or maybe do a story telling or reading. What is your idea?

**OFMC INFORMATION:**

**BEST DECORATED  
HOMES CONTEST**

judging will take place the following Thursday after Thanksgiving. (This year Thanksgiving will be celebrated on Thursday, November 22<sup>nd</sup> )

**Judging for the contest will take place in the evening of Thursday, November 29<sup>th</sup>.** Please turn on your lights!

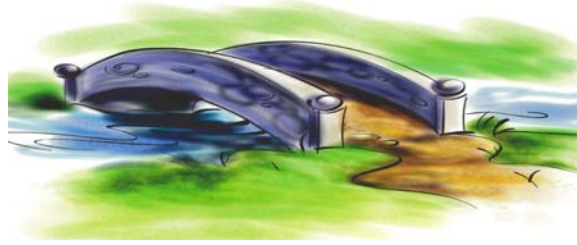
There will be 2 winners from each section of town. The town is divided into 4 sections at Lexington Avenue and Main Street. Thanks to all who have participated in the past; we look forward to seeing more houses lit up this year!

**Festival Highlights**

Yes, the Lions Club is still going to host the pancake breakfast, a big hit and fun place to have breakfast with just about everyone in town! There will be craft shows, a train display, horse carriage rides, the Tree Lighting, Santa, the businesses will host their annual Open Houses, lots of fun and cheer, music and singing and sharing memories. WOW, the holidays will be here before we know it!

Oh yes, there will be an elf contest too! Last year there were many Santa helpers! Winners will be announced at the Tree Lighting.

It is customary for the Newsletter to announce Christmas programs and services taking place at the churches during the holidays. If you would like to make the announcements please contact Kim Deyer by E-mail at cckimdeyer@aol.com when the information becomes available. November's deadline for the December issue will be Nov. 15<sup>th</sup> (With a few days of grace. Amen.)



## **STONEBRIDGE SUMMER SATURDAY NIGHT CONCERTS** **Downtown Green Pavilion, Wilmore, KY**

### **Wilmore's Downtown Green**

The Stonebridge Summer Saturday Night Concert series concluded with "Picnic Under The Stars", Saturday, September 8th at the Wilmore Downtown Green. All summer many folks enjoyed the music. The concerts were all free and open to the public.

Again, many thanks to Joe Gierlach who made a lot of this happen. His love for just about every genre of music and having contacts with the musicians provided excellent entertainment. Joe spent about 6 hours each Saturday setting up equipment, monitoring it during the performances, and then the breakdown; several volunteers assisted and that was greatly appreciated! Also, thanks to the Community Development Board for the volunteer work toward this continuous project. We look forward to the new ideas and landscaping for next years programs.

Thanks to our sponsors Gloria Hansen and Rachel King of the Stonebridge Development. We look forward to two more years of their generous contribution of helping to bring the Summer Concert Series to the Downtown Green.

The fabulous seventeen piece big band known as The Metrognomes entertained with an evening of jazz, rock, Latin, and swing ([ww.themetrognomes.com](http://ww.themetrognomes.com)) Decorated dance floors were ready to receive those who could not resist the urge to move! A lot of young children along with their parents enjoyed a night on the dance floor.

**Wilmore Community  
Development Program**

*Presents the*  
**Wilmore Arts & Crafts  
Festival**

Saturday, October 6<sup>th</sup>, 2007  
9:00 am - 4:00 pm



In Historic Downtown Wilmore  
Features: Fine Artists, True  
Craftspeople and Hand-crafted  
items

Main Street will be closed to vehicles and festival goers can stroll and shop from a wide array of juried artists and craftsmen. Plan to meet your family and friends near the railroad tracks on Main Street where tables and chairs will be set-up near a variety of musical entertainment. Food vendors will be nearby to meet the need of your festival food craving!

For more information please call City Hall at 858-4411 or Freida Lear at 858-1222

**VETERANS DAY  
PARADE  
SATURDAY,  
NOVEMBER 10<sup>th</sup>**

The Parade line-up starts at 9:00-9:30 am on Walters Lane and Rice Street.

It travels up East Main Street to North Lexington Avenue and then to the Thomson-Hood Veterans Center

This is a usually a brisk day and a bit of a hike for walkers. (Dress warm!)

If your church, school, business, club or organization would like to take part, please contact City Hall at

858-4411

**The parade starts at  
10:00 am**

**Please join us to honor  
the men and women  
who have served our  
great nation.**

# Wilmore Senior Community Center October Activities

**Thursday, October 4<sup>th</sup>, 11 am**

## **Piano Favorites of Eda Jameson**

Returning to Wilmore for her 25<sup>th</sup> Anniversary Concert Season, Ms. Jameson will perform works of Bach, Mozart, Debussy and Chopin. For more than 70 years she has delighted audiences around the world. Come see why... **Free and open to the public.**

**Saturday, October 13<sup>th</sup>, 8 am – 4 pm**

## **Annual Village Festival**

Enjoy a day full of fun, food and festivities including a giant yard and furniture sale, bake goods, silent auction, music and attractions for the kids! **All proceeds benefit Wesley Village.**

**Tuesday, October 16<sup>th</sup>, 3:30 pm**

## **Community Vesper Service**

Majors Michael and Cathy Himes, along with student musicians from the Asbury College Salvation Army Student Fellowship, will lead us in a special hour of inspiration.

**Free and open to the public.**

**Thursday, October 18<sup>th</sup>, 3:30 pm**

## **Asbury College Masterworks Series**

Asbury's finest "Collegium Musicum" performers return to open a new series of masterwork presentations. String, brass and guitar chamber ensembles will be featured.

**Free and open to the public.**

**Tuesday, October 23<sup>rd</sup>, 3:30 pm**

## **"Who Do You Say I Am"**

This popular book by Dr. J.T. Seamands will be the focus of a new monthly study group exploring such questions as "Who is this person, Jesus?" and "What has He done for me?"

**Free and open to the public.**

**Thursday, October 25<sup>th</sup>, 6:00 pm**

## **Movie Night: "Guns of Navarone"**

Can a commando team of Allied soldiers and Greek patriots (including Gregory Peck, Anthony Quinn and David Niven) succeed in doing the impossible?

The answer lies in this stunning 1961 Academy Award winning blockbuster.

**Free and open to the public.**

**Friday, October 26<sup>th</sup>, 3:00 pm**

## **Fall Back to Exercise: NuStep TRS 4000's**

Winter months mean less outdoor activity. Come learn how to keep in shape indoors on the Community Center's most popular exercise machines. Free refreshments and T-shirts!

**Free and open to the public.**

**For more information on all the life-enriching activities of the Wilmore Senior Community Center, please call Alan Beuscher at Wesley Village, 858-3865 ext. 238.**

## **Please Toss Your Trash with the Planet in Mind**

Wilmore is home to a recently-arrived couple with their two teens: Dr. Matthew Sleeth and his wife, Nancy, with Clarke and Emma. Several years ago, it became apparent to Matthew, a medical doctor, that disease and the environment are intimately linked.

In his medical practice he saw too many sick and dying patients whose ill-health was directly related to the pollution in our environment. A simplistic connection stirred Matthew: "Less pollution will mean fewer deaths!" It was time to act! After investigation, research and personal lifestyle-changes, (he gave up his practice for one! and then wrote "Serve God, Save the Planet") Matthew has now become a spokesman for "Creation Care", and has recently accepted the position of Director of the Christian environmentalist organization, "A Rocha" (Portuguese for Rock.) This international group is dedicated to better stewardship of God's creation. Matthew and his wife Nancy now live in a home that is the size of their former garage, hang their clothes up to dry, wash dishes by hand, and their utility bills are 1/10 the national average. (Memo to self: I must do something, too.)

I consume vast amounts of stuff through the week, and I use things and go to places in a kind of bleary haze of activity. I give hardly a thought about the impact on the earth of my behaviors and actions.

Well, it's time to re-think this matter. Literally "this matter".

Soon some of it will run out! "Save the trees!" "Don't waste water!" You have heard this before from "Environmental Whackos" who are keen to prevent a dam being built, "endangering" some small two-toed fuzzy-creeper thingy. (I exaggerate to make you smile.) BUT, there is a middle ground here. We should not toss out 'the baby with the bathwater'. Our created home DOES need better care. Our unhealthy habits and wanton wastefulness are becoming alarming. God's earth is in need of more careful management. Stewardship even.

Matthew and his wife are vanguards for a Wilmore chapter of Creation Care, which will begin holding meetings locally, the first and third Thursdays of each month.

Twenty-five local residents attended the inaugural meeting last week, and determined that the Wilmore Creation Care community would be a "Take Action" group, initiating new and different environmentally-friendly activities locally and in the greater Jessamine county area. If you can find out ways, you can be involved in the better stewardship of our planet. Call Aureol for details, 327.8130 (cell) or at her house 858.4431.

email: [Aureol@gmail.com](mailto:Aureol@gmail.com)

## **Stay Fit Despite Budget Cuts!**

Ever-tightening school budgets have led to cuts in physical education programs across the country. If it's happening in your district, it's more important than ever to help your child fit in the activity he or she needs every week! How? It's easy! Try these tips from the experts at the American Council on Exercise:

- \* Think of physical fitness as part of your children's overall well-being. Make it just as much of a priority as feeding them well and stimulating their minds.

- \* Find out how often and for how long your child is in gym class. Then add after-school activities to make up the difference. Aim for at least one hour of activity a day!

- \* Get your children involved in organized sports, or sign him or her up for a class such as dance, swimming, or martial arts. No time? Share the load by forming car-pool agreements with other parents.

- \* Don't forget your other options – like a trip to the park, a bike ride around the block, or a night at the roller rink. Make playtime active time!

- \* Attend a school board meeting or organize a petition to let your district know that you value a well-rounded education – and that includes gym class!

- \* Get active yourself! If you're not moving, you're sending a powerful message to your kids that exercise doesn't matter. Be an inspiration!

**Wilmore Parks & Recreation  
and  
Nicholasville/Jessamine  
County  
Parks & Recreation**

present a:  
DISC GOLF LEAGUE

League with a random-draw  
doubles format using a handicap  
scoring system

Five week season beginning Sep.  
18th at Centennial Park (Ichthus)  
in Wilmore.

Cost is \$1 per person per week.  
Women and children play free!

18 holes will be played with  
random pairings on Tuesday each  
week starting at 6:00 p.m.

The 1st 9 holes will be Best  
Shot; the  
2nd 9 holes will be Alternate Shot

Each week's winners receive  
free  
discs; because of the handicap  
scoring  
system, almost anyone can win any  
given week!

Standings points accumulate  
over the  
course of the season based on each  
player's finish each week.

The top 8 season finishers  
qualify for a free 9-hole, match  
play tournament with handicaps.

1st, 2nd, and 3rd place  
trophies given out to the  
tournament winners.

For more information, please  
contact

Lyle McCoon, at the Nicholasville  
P&R 885-9787, Ext. 24  
or Amy Fitch at 858-9031

15 Kid-Friendly Snacks!

When your child asks for a  
snack, embrace the opportunity  
to teach him or her about  
snacking wisely! Need some  
ideas? Try these 15 healthy  
munchies recommended by the  
American Academy of Family  
Physicians:

1. Apple slices with natural  
peanut butter
2. Grapes
3. Raisins or other dried  
fruit
4. Low-fat yogurt topped with  
granola
5. Pineapple chunks
6. Celery sticks with natural  
peanut butter
7. Broccoli and cauliflower  
florets with low-fat ranch dip
8. Low-fat cottage cheese
9. Low-fat cereal bars
10. 100 percent fruit juice  
Popsicles
11. Air-popped popcorn  
sprinkled with garlic, onion, or  
chili powder
12. Sunflower or pumpkin seeds
13. Low-fat pretzels
14. Rice cakes
15. Pita or bagel chips

The Wilmore Women's  
Club  
will meet Monday, Oct  
8th  
7:00 pm at the  
Wilmore Community  
Senior Center at Wesley  
Village

Art Exhibit  
of Local KY Artists  
now on display at  
Tastebuds Restaurant  
319 East Main Street

Stop in for lunch and  
view the acrylic paintings  
thru December

9-6 Monday - Friday  
9-2 Saturday  
Closed Sunday

For more information  
Please contact  
Janice Miller at 858-2519  
On Saturday, October 6<sup>th</sup>  
10:00 am - 5:00 pm  
during the Craft Fair  
the Rice House will  
feature students  
taking art classes.



Attention: Volunteers who  
assisted with the Third Annual  
High Bridge Homecoming  
Festival  
are invited to gather for an  
appreciation soup supper  
Friday, October 26<sup>th</sup> @ 6:00  
p.m.  
High Bridge Fire House  
Community Center. Bring soup,  
sandwiches or dessert. Contact  
858-3895  
if there are any questions.

A Sunday Afternoon Sock Hop & Swing Dance  
will take place on October 14<sup>th</sup>  
@ High Bridge Park

The event is currently sponsored by  
Nicholasville-Jessamine County Parks & Rec.,  
the UK Swing Dance Club, and  
Lexington Arthur Murray.  
Cost is \$5 a person; everyone is invited; it  
is open to the public! There is a swing  
dance lesson from 3-4 pm, provided by the UK  
Swing Dance Club, with dancing from 4-7 pm.  
Music provided by Blair Carman  
and the Belleview Boys  
a 1950's rock 'n' roll type band. The Mid-  
West's hottest piano pumpin', rockabilly  
band.

This web page has all the info:  
<http://www.uky.edu/StudentOrgs/HKSDC/HB.htm>

If your business or organization would like to announce an event  
or activity please E-mail Kim Deyer at [cckimdeyer@aol.com](mailto:cckimdeyer@aol.com) or  
call (859) 351-0337. Otherwise, contact City Hall at 858-4411.  
All information is needed by the 15<sup>th</sup> of the month. Thank you!  
And remember you can always say I read it in the *Wilmore  
Newsletter!* For additional community news and information  
please visit the Wilmore web site online at [www.wilmore.org](http://www.wilmore.org)

## Recycle Schedule

Pick up is on Wednesdays  
Every other week

SECTION A	SECTION B
(Mon. & Thurs.)	(Tues. & Fri.)
10 <sup>th</sup> & 24 <sup>th</sup>	3 <sup>rd</sup> , 17 <sup>th</sup> & 31 <sup>st</sup>

Kim Deyer, editor